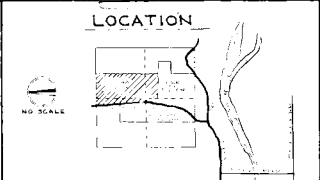
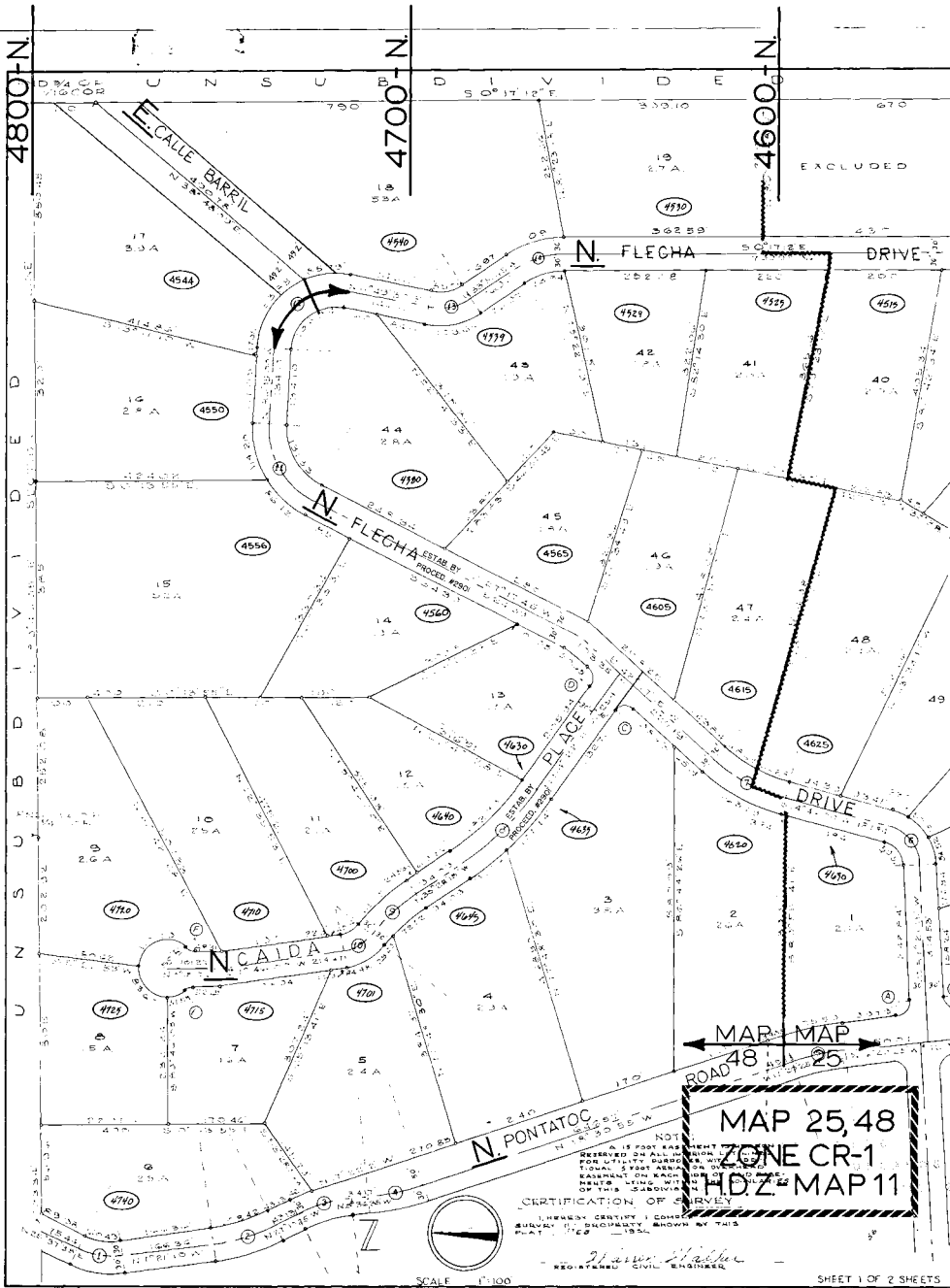


4500-E.

4400-E.

4300-E.

4200-E.



**APPROVALS**

*William J. ...*  
 CHAIRMAN PLANNING COMM. DATE *Mar. 20-1956*

*W. J. ...*  
 CITY ENGINEER DATE

I, IVAN R. HAWKINS, HEREBY CERTIFY THAT THIS PLAT WAS APPROVED BY THE MAYOR AND COUNCIL OF THE CITY OF TUCSON, ARIZONA ON THE *17th* DAY OF *March*, 1956

*Walter J. ...*  
 COUNTY ENGINEER DATE *3-20-56*

I, RICHARD ... HEREBY CERTIFY THAT THIS PLAT WAS APPROVED BY THE BOARD OF SUPERVISORS OF PIMA COUNTY, ARIZONA ON THE *20th* DAY OF *March*, 1956

*Edna ...*  
 CLERK BOARD OF SUPERVISORS DATE

**DEDICATION**

WE THE UNDERSIGNED HEREBY CERTIFY THAT WE ARE THE SOLE OWNERS OF THE LAND SHOWN ON THIS PLAT AND THAT WE HAVE CAUSED SAME TO BE SUBDIVIDED IN THE MANNER HERE SHOWN AND FURTHERMORE, WE DO HEREBY DEDICATE TO THE USE OF THE PUBLIC, FOREVER, THE SUBJECTS ROADS AND UTILITY EASEMENTS AS NOTED HEREON. UTILITY AND OVERHEAD EASEMENTS NOTED HEREON ARE HEREBY DEDICATED ONLY FOR INSTALLATION AND MAINTENANCE OF UTILITY LINES.

*James ...*  
*James ...*  
*James ...*  
 PIMALAND CO. A CORP.  
 BY *James ...*  
 ARIZONA AND TITLE TRUST COMPANY, ITS PRESIDENT  
 CORPORATION, AS TRUSTEE  
 BY *James ...*  
 Notary Public

STATE OF ARIZONA ss  
 COUNTY OF PIMA

THIS INSTRUMENT WAS ACKNOWLEDGED BEFORE ME THIS *17th* DAY OF *March*, 1956

BY: *James ...*  
 JAMES ... MARY M. ... FRANCIS M. ...  
 CALVIN ... MARIAN F. ... THOMAS J. ... BOBBIE W. ...  
 THOMAS ... AS PRESIDENT OF PIMALAND CO. A CORPORATION, AND DONALD ... AS TRUST OFFICER OF ARIZONA LAND AND TITLE TRUST COMPANY, A CORPORATION.

By *James ...*  
 NOTARY PUBLIC  
 My Commission Expires *Nov. 11, 1956*

**RECORD DATA**

STATE OF ARIZONA ss *16 1956*  
 COUNTY OF PIMA *Vol. 500*

FILED FOR RECORD AT THE REQUEST OF *James ...* ON THIS *20th* DAY OF *March*, 1956 AT *1:02 P.M.* IN BOOK *11* OF MAPS AND PLATS AT PAGE *14* THEREOF

AJINA SULLINGER  
 COUNTY RECORDER

By *James ...*  
 Notary Public

**AMENDED PLAT OF FLECHA CAIDA RANCH ESTATES**

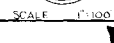
A SUBDIVISION OF THE NW 1/4 OF NE 1/4, SW 1/4 OF NE 1/4, NW 1/4 OF SE 1/4, SW 1/4 OF NE 1/4, NW 1/4 OF SE 1/4, OF SECTION 27, T13S, R14E, G4SR, B7M, AND LOT 11 OF CERRO DE FALCON SUBDIVISION, BOOK 11 OF MAPS & PLATS, PAGE 10, RECORDS OF COUNTY RECORDER, PIMA COUNTY, ARIZONA

MAP 48  
 MAP 25  
 MAP 25, 48  
 ZONE CR-1  
 HDZ-MAP 11

CERTIFICATION OF SURVEY

I, HEREBY CERTIFY I CONDUCTED SURVEY IN ACCORDANCE WITH THIS PLAT.

*James ...*  
 REGISTERED CIVIL ENGINEER



SHEET 1 OF 2 SHEETS