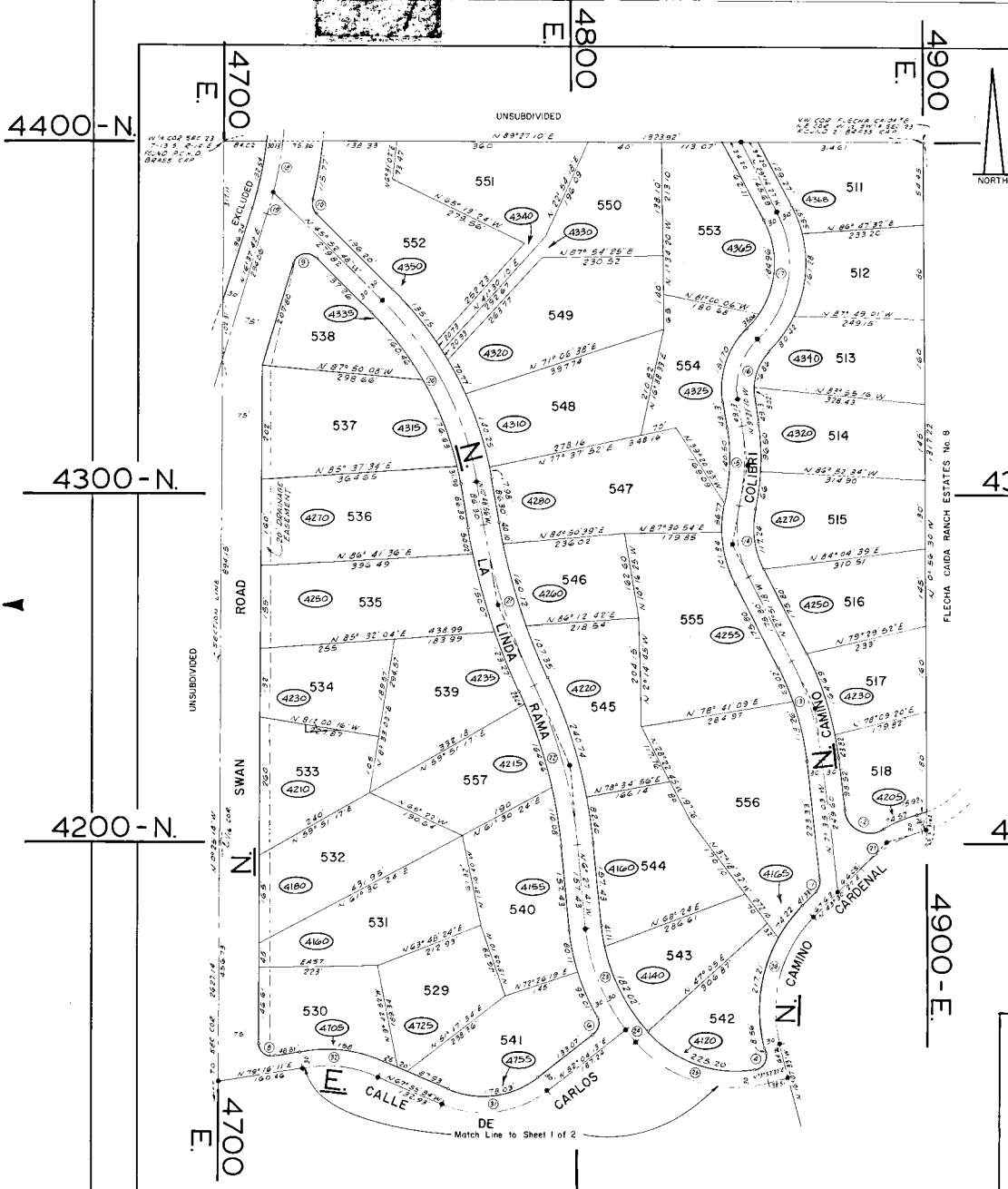


CURVE DATA				
NO	Δ	RADIUS	ST	LENGTH
1	33°17'26"	25	26.48	40.71
2	86°47'34"	25	23.60	37.63
3	86°48'04"	25	23.60	37.92
4	84°10'21"	25	22.71	41.30
5	81°41'29"	25	21.61	35.67
6	82°47'44"	25	20.04	34.13
7	70°41'29"	25	20.65	34.77
8	100°18'31"	25	29.96	43.77
9	117°29'30"	25	41.19	61.27
10	59°04'40"	25	14.15	25.75
11	67°05'30"	25	11.95	22.29
12	113°04'36"	50	75.65	98.68
13	20°16'15"	559.37	100	197.90
14	39°30'45"	200	7.83	137.92
15	20°10'31"	413.41	76.61	151.50
16	54°15'38"	120.19	16.71	123.29
17	74°09'15"	200	151.13	258.85
18	81°09'46"	716.20	51.05	101.93
19	31°10'08"	716.20	12.81	39.91
20	36°03'52"	639.07	200	387.43
21	15°05"	1198.35	150.35	315.47
22	19°26'15"	922.51	158	312.90
23	31°28'08"	383.53	108.05	210.64
24	44°13'35"	383.53	15.72	31.42
25	63°10'07"	250	154.71	277.08
26	21°40'41"	200	3.85	7.89
27	30°51'46"	253.85	70.14	136.67
28	59°38"	250	143.27	260.20
29	47°13"	127.23	150	296.49
30	34°03'01"	248.15	70.71	136.09
31	60°00'13"	200	115.48	209.45
32	32°48'15"	265.96	72.42	140.82



**FLECHA CAIDA RANCH ESTATES #10**  
 BEING A SUBDIVISION OF A PORTION OF  
 THE W 1/2 OF THE SW 1/4 OF SECTION 23,  
 T-13 S., R-14 E., G & S. R. B. & M., PIMA COUNTY,  
 ARIZONA.

**MADDOCK & ASSOCIATES**

SCALE: 1" = 100' SHEET 2 OF 2 JANUARY, 1960