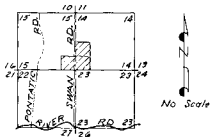


LOCATION



Note: All natural water drainageways shall not be changed or altered in any way except as approved by the Pima County Engineer.

APPROVALS

By Walter A. Dwyer COUNTY ENGINEER 11-1-57 DATE
I, ELSA B. HANNA, hereby certify that this Plat was approved by the Board of Supervisors of Pima County, Arizona on the 21st Day of November, 1957.
By W. A. Hanna CLERK, BOARD OF SUPERVISORS 11-1-57 DATE

DEDICATION

We, the Undersigned, hereby certify that we are the sole owners of the land shown on this Plat and that we have caused same to be subdivided in the manner here shown, and furthermore, we do hereby dedicate to the use of the Public, forever, the Streets, Roads and Utility Easements as noted hereon.
Utility and Overhead Easements noted hereon are hereby dedicated only for installation and maintenance of Utility Lines.

TUCSON TITLE INSURANCE COMPANY, as Trustee under a trust agreement dated October 31, 1956, known as Trust No. 133189, and as Trustee under a trust agreement dated September 24, 1957, known as Trust No. 133180.

By W. A. Hanna Its Vice President
ATTEST: Anna Sullinger Its Secretary
STATE OF ARIZONA COUNTY OF PIMA
This instrument was acknowledged before me this 22nd day of November, 1957, by L. A. DENCELO, as Vice President, and by THOS. L. CHAMBERS as Secretary of TUCSON TITLE INSURANCE COMPANY, a corporation, as Trustee under a trust agreement dated October 31, 1956, known as Trust No. 133189, and as Trustee under a trust agreement dated September 24, 1957, known as Trust No. 133180.
My Commission Expires: 12-31-61
NOTARY PUBLIC

RECORD DATA

STATE OF ARIZONA COUNTY OF PIMA
Filed for record at the request of Anna Sullinger on this 27th Day of Nov 1957, at 1:33 in Book 12 of Maps and Plats at Page 67 thereof.
ANNA SULLINGER COUNTY RECORDER
By W. A. Hanna Secretary

PLAT OF FLECHA CAIDA RANCH ESTATES NO 2

A subdivision of the SE 1/4 of SE 1/4 of Sect. 15 and the SW 1/4 of SW 1/4 and the NW 1/4 of SW 1/4 of Section 14, T19S, R14E, G 43RB & M. PIMA COUNTY, ARIZONA 1957

4500-E

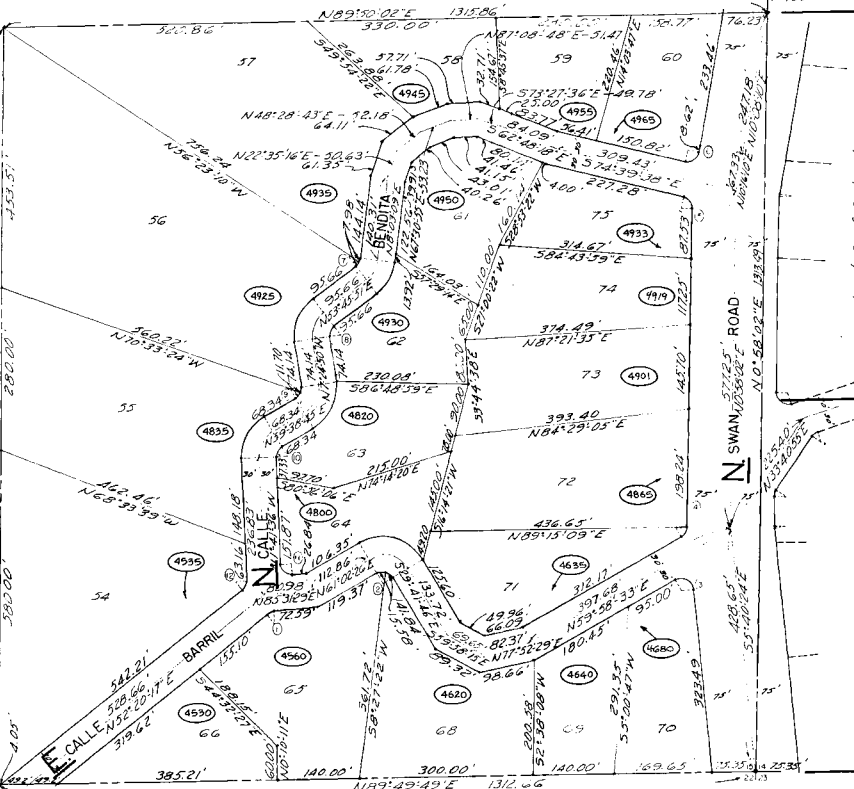
4600-E

4700-E

5000-N

4900-N

4800-N



Note: 15" Water & Utility easements are shown indicated through all subdivision boundary lines and 7.5" water & utility easements are dedicated across every reach side of all other lot lines preceding and right of way lines.
Legend:
- Set 1/2 open pipe.
- Curve number (see sheets 2 & 3 for schedule.)

Certification of Survey
I hereby certify I completed the survey of property shown by this Plat on 11-1-1957.
W. A. Hanna
Registered Civil Engineer for
JOHANNESSEN & GIRARD



MAP 48
ZONE CR-1
HDZ-11

Sheet 1 of 3 sheets