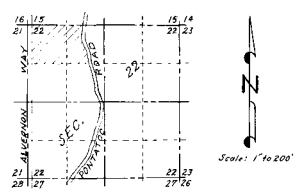


GENERAL NOTES:

- All natural water drainageways shall not be changed or altered in any way except as approved by the Pima County Engineer.
- 15' Water & Utility easements are hereon dedicated along all subdivision boundary lines. 7.5' water & utility easements are dedicated hereon along each side of all other lot lines excepting road right-of-way lines.
- Bearings of bearings: Center Line of Pontatac Road, Flecha Caida #1, Book 11, Page 74.

APPROVALS

David E. Thomas
 CHAIRMAN, PLANNING COMMITTEE
 4/17/58 DATE
W. H. Jones
 CITY ENGINEER
 4/17/58 DATE
 I, MARY FIELDS, hereby certify that this Plat was approved by the Mayor and Council of the City of Tucson on the 17. Day of Feb., 1958
Mary Fields
 CLERK, CITY OF TUCSON
 2-17-58 DATE
 1/4 Cor-Set 1/2 O.P.

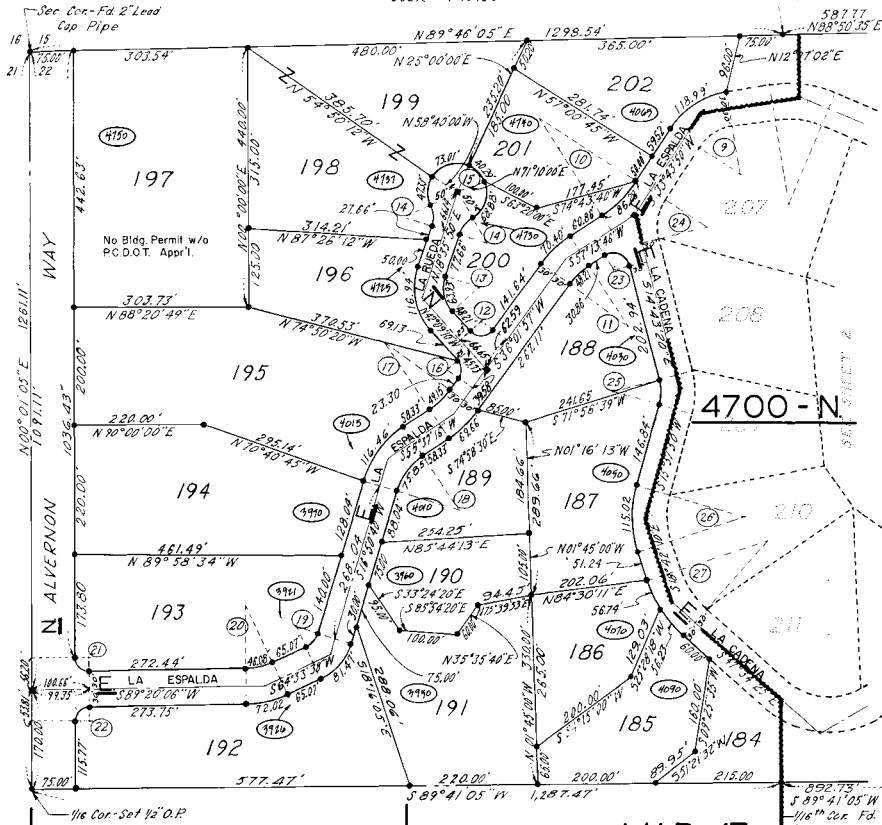


Scale = 1" to 100'

4800-N

4700-N

4600-N



LEGEND

- Set 1/2" Open Pipe
- Curve Number (See Sheet 2 for Schedule)
- Pima County Survey Monument

MAP 47

MAP 48

CERTIFICATION OF SURVEY

I hereby certify I completed the survey of property shown by this

MAP 47, 48
ZONE CR-1
H.D.Z. - 11

SHEET 1 OF 2

APPROVALS

Walter A. Curre
 COUNTY ENGINEER
 2-18-58
 I, ELSA B. MANNA, hereby certify that this Plat was approved by the Board of Supervisor of Pima County, Arizona on the 18. Day of February, 1958.
Elsa B. Manna
 CLERK, BOARD OF SUPERVISORS
 2-18-58 DATE

DEDICATION

We, the Undersigned, hereby certify that We are the sole owners of the land shown on this Plat and that We have caused some to be subdivided in the manner here shown, and furthermore, We do hereby dedicate to the Use of the Public, forever, the Streets, Roads and Utility Easements as noted hereon.
 Utility and Overhead Easements noted hereon are Hereby dedicated to only for installation and maintenance of Utility Lines. TUCSON TITLE INSURANCE COMPANY, as Trustee under a trust agreement dated Dec. 17, 1956, known as Trust No. 214090

ITS VICE PRESIDENT

ATTEST
Walter A. Curre
 COUNTY ENGINEER
 ITS SECRETARY

STATE OF ARIZONA
 COUNTY OF PIMA

This instrument was acknowledged before me this 18 day of Feb., 1958 by L. A. RENEER, as Vice President, and by THAS. L. CHAMBERS as Secretary of TUCSON TITLE INSURANCE COMPANY, a Corporation, as Trustee under a trust agreement dated Dec. 17, 1956, known as Trust No. 214090.

Debra C. Lee
 NOTARY PUBLIC

My Commission Expires April 29, 1958

RECORD DATA

STATE OF ARIZONA 18 1958
 COUNTY OF PIMA 7-18-58

Filed for record at the request of *Walter A. Curre* on this 18 Day of February, 1958 at 12:18 in Book 12 of Maps and Plats at Page 86 thereof.

ANNA SULLINGER
 COUNTY RECORDER

BY *Debra C. Lee* DEPUTY
 PLAT OF
FLECHA CAIDA RANCH ESTATES
4
 A Subdivision of the NW 1/4 of the NW 1/4 and a fractional portion of the NE 1/4 of the NW 1/4 of Section 22, T13S, R14E, G1 S.R.B. 1st.
 PIMA COUNTY, ARIZONA