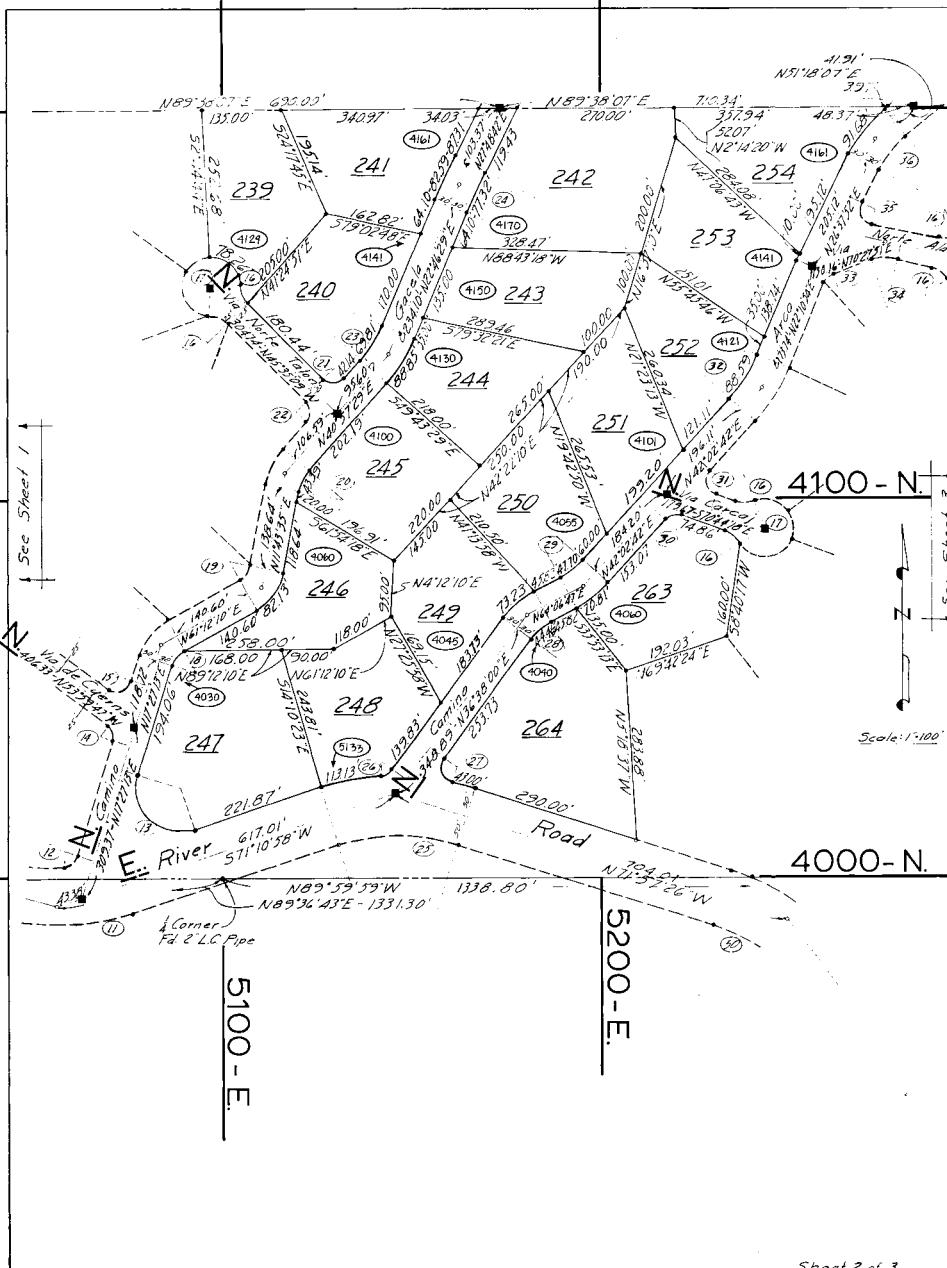


CURVE DATA

No	Rad.	Δ	L _i	L _e	L _o	T _g	T _r
1	163.67	27°28'00"	64.05	70.46	92.04	40.00	—
2	157.93	29°30'00"	62.75	70.22	93.67	40.00	—
3	320.29	6°56'00"	364.8	329.53	63.39	30.00	—
4	162.76	6°30'00"	146.29	172.34	212.40	100.00	—
5	174.43	46°32'00"	117.50	141.66	166.03	75.00	—
6	25.00	165°22'54"	46.12	—	—	—	39.00
7	167.90	17°08'00"	37.26	44.23	53.20	22.28	—
8	25.00	67°07'18"	—	—	—	—	14.76
9	410.36	16°22'57"	103.04	117.33	131.63	59.06	—
10	1394.08	37°6'11"	76.75	79.64	82.46	39.81	—
11	410.00	33°04'11"	207.99	236.00	265.77	121.83	—
12	25.00	68°15'24"	29.79	—	—	—	16.94
13	75.98	126°16'15"	167.46	—	—	—	150.00
14	25.00	71°27'00"	31.18	—	—	—	17.90
15	25.00	108°33'00"	47.36	—	—	—	34.76
16	30.00	41°24'35"	—	—	36.14	—	18.90
17	30.00	262°49'10"	—	—	—	—	22.93
18	74.72	43°44'37"	34.15	57.04	79.96	30.00	—
19	65.71	49°28'35"	30.32	56.22	82.13	30.00	—
20	115.04	2°13'34"	43.39	58.69	74.00	30.00	—
21	25.00	86°32'38"	37.76	—	—	—	23.58
22	25.00	93°27'22"	40.78	—	—	—	26.36
23	249.97	18°11'20"	69.81	79.33	80.25	40.00	—
24	209.50	5°02'13"	77.32	79.93	82.59	40.00	—
25	384.91	36°51'36"	213.46	247.62	279.79	121.06	—
26	25.00	49°27'16"	21.98	—	—	—	11.57
27	25.00	114°13'48"	49.84	—	—	—	38.61
28	122.69	33°28'07"	44.44	58.84	73.23	30.00	—
29	153.85	22°04'03"	47.70	59.24	70.21	30.00	—
30	25.00	67°13'00"	29.37	—	—	—	16.62
31	25.00	112°37'00"	49.21	—	—	—	37.62
32	283.33	19°37'48"	88.79	99.00	109.40	50.00	—
33	25.00	48°16'57"	21.07	—	—	—	11.20
34	101.14	33°02'34"	43.91	58.33	—	30.00	—
35	25.00	76°32'33"	33.58	—	—	—	19.64
36	182.92	24°20'15"	63.84	78.76	91.68	40.00	—
39	55.00	23°30'04"	10.25	22.56	34.90	11.44	—
40	25.00	104°14'20"	45.48	—	—	—	32.13
41	134.44	33°52'46"	77.93	96.72	—	30.00	—
42	25.00	39°53'18"	17.60	—	—	—	9.27
43	180.88	30°54'18"	81.38	97.56	113.74	50.00	—
44	147.62	22°58'33"	47.16	59.19	71.22	30.00	—
45	89.28	37°09'26"	30.43	57.29	77.33	30.00	—
46	25.00	99°01'52"	43.27	—	—	—	29.28
47	25.00	85°27'14"	34.07	—	—	—	13.14
48	193.26	70°08'30"	139.98	168.70	339.77	162.11	—
49	287.54	60°33'00"	249.38	301.76	346.16	166.41	—
50	384.02	33°29'36"	192.23	236.76	266.28	116.37	—
51	161.97	114°28'03"	128.63	196.13	243.61	249.35	—



Sheet 2 of 3

C12-37-50